



2025

# SEMESTER ONE PROGRAMS

10 FEBRUARY TO 4 JULY

This document contains information for all  
programs running in Semester 1 2025.





# TABLE OF CONTENTS

————— CLICK ON TEXT TO GO TO THAT PAGE —————

<b>ABOUT THE MISFIT PROJECT.....</b>	<b>3</b>
<b>PERFORMANCE.....</b>	<b>4</b>
<b>CREATIVE.....</b>	<b>7</b>
<b>SOCIAL &amp; WELLBEING.....</b>	<b>9</b>
<b>DUNGEONS &amp; DRAGONS.....</b>	<b>12</b>
<b>HOMESCHOOL.....</b>	<b>13</b>
<b>ADVENTURES.....</b>	<b>14</b>
<b>18+ SOCIALS.....</b>	<b>15</b>
<b>GETAWAYS.....</b>	<b>18</b>
<b>PRICE GUIDE.....</b>	<b>19</b>
<b>2024-2025 NDIS RATES.....</b>	<b>21</b>





# ABOUT THE MISFIT PROJECT

The Misfit Project is an organisation that provides young people with a safe place to belong and empowers them through creativity!

Through mentoring, programs, and camps we aim to build up the voices of young people, supporting them to feel heard, empowering them to speak up, and helping to provide them the tools to tackle life, whilst engaging in a range of activities that provide an outlet for creativity and growth.



## PROGRAMS

The Misfit Project runs a variety of different programs each aimed at developing the skills, wellbeing, and confidence of young people.

## MENTORING

We provide one on one mentoring where we work with young people to identify their goals and guide them to achieving those desired outcomes.

## CAMPS

In January and July, we run accessible, inclusive camps for a range of age groups, where play, self-development, and building confidence and connections for our young people are the core goal.

## CONTACT US



0400 889 316



[themisfitproject@outlook.com](mailto:themisfitproject@outlook.com)



[misfitprojectau](https://www.instagram.com/misfitprojectau)



The MISFIT Project



[themisfitproject.org.au](http://themisfitproject.org.au)



## JUNIORS THEATRE



Drama games, being silly, and performing! This program is for our young ones to have a safe environment to discover their voice, get creative, and nurture confidence. A perfect place to learn the theatre skills and make connections while working on a theatre show!

**MONDAYS**  
4:30-6PM  
8-12 YRS  
MOOROOLBARK

**WEDNESDAYS**  
4:30-6PM  
8-12 YRS  
WARBURTON



## INTERMEDIATE THEATRE



This is a bridging program between Juniors and Up & Comers Theatre. Play drama games, learn the lines to a script, and put on a performance in front of a live audience. Intermediate Theatre is about improving confidence, having fun, and learning new skills.

**WEDNESDAYS**  
4:30-6:30PM  
12-15 YRS  
WARBURTON

## UP & COMERS THEATRE



Calling all thespians, drama queens, and actors! Up & Comers Theatre is for teens looking to be a part of theatre! This is the place to develop performance skills, confidence, and creativity! You will work on pieces that relate to issues and themes relevant to what you might be facing. An outcome of this program is a theatre performance!

**MONDAYS**  
6:30-8:30PM  
12-18 YRS  
MOOROOLBARK

**WEDNESDAYS**  
6:30-8:30PM  
14-18 YRS  
WARBURTON

## STORYTELLERS THEATRE



This is the program for an older cohort to continue their adventure in the realm of theatre! Get together each week to play games and develop an entire theatre show! Work on confidence, performance, and all of the different aspects of theatre.

**TUESDAYS**  
6:45-8:45PM  
18-26 YRS  
MOOROOLBARK



## BACKSTAGE BANDITS



Learn the ins and outs of different departments for theatre shows in this hands-on program. From pre-production to performance, from lighting and sound to set, props, and stage managing.

MONDAYS  
5:30-7:30PM  
16-26 YRS  
MOOROOLBARK



## BAND CLUB



This program is all about making music in a band. Bring your instrument, learn new charts, and vibe out with fellow musicians. Band club will provide tips and tricks for improving your playing, mastering your instrument, and working with others. We will build up a repertoire of performable song throughout the year.

WEDNESDAYS  
4:30-6PM  
12-21 YRS  
BAYSWATER



## IMPROV TROUPE



Do you like *Whose Line Is It Anyway?* Thank *God You're Here*? This program is all about improvised theatre, playing improv games, and thinking on your feet! Learn helpful skills to navigate the unknown and prepare to laugh your head off!

THURSDAYS  
7:30-9PM  
18-26 YRS  
BAYSWATER

## GLEE CLUB



Your voice is meant to be heard! Glee Club is that opportunity to belt out a ballad, sing solo, and with others! Glee Club is a safe, judgement-free zone that aims to nurture singing in different genres and styles. From amateur singers to Adele, all skill levels are welcome!

THURSDAYS  
4:30-6:30PM  
14-26 YRS  
LILYDALE



# DANCERS



Come learn and create different types of dance; from well known trends to classics like the Can-Can. Develop pieces inspired by song and get your body moving to the groove. This is a fun, energetic, beginner level program inclusive to all!

**TUESDAYS**  
**5-6:30PM**  
**14-21 YRS**  
**MOOROOLBARK**



## SKETCHERS



A program for the artists, the drawers, and the doodlers! Come join an environment ripe for creative expression through pencil, pen, and paint! Develop your drawing skills and give your creativity a chance to shine in a relaxing, safe, place.

**MONDAYS**  
4:30-6PM  
14-26 YRS  
MOOROOLBARK

## WRITERS



The pen is mightier than the sword! Writers is a program for the authors, the poets, and the wordsmiths! This is an opportunity to be around fellow writers and hone your use of words, while widening your vocabulary. Poems, stories, plays, and prose, we dabble in it all!

**TUESDAYS**  
4:30-6PM  
12-26 YRS  
WARBURTON

## SONGWRITERS



Have you ever wanted to write your own song? This program will help you to do exactly that! Learn the ins-and-outs of songwriting. A perfect opportunity to express yourself through creativity, find your voice, and have a good ol' time in a wholesome, safe, environment! Bring your instruments, warm up your voice, and sharpen your pencils!

**THURSDAYS**  
7-8:30PM  
14-26 YRS  
LILYDALE

## LEGO CLUB



'Play well' with the world's most famous blocks! This program is wonderful for getting creative with the lego provided in a safe environment. Have fun building! The only limit is your imagination!

**WEDNESDAYS**  
FORTNIGHTLY  
4-5:30PM  
8-12 YRS  
BAYSWATER



# CRAFT & CREATE



Each session, learn how to create a different craft. From origami to clay sculpting, painting to prop making, This program is a fantastic opportunity to gather in a space to learn, develop skills and become a master at your craft!

WEDNESDAYS  
FORTNIGHTLY  
4-5:30PM  
14-26 YRS  
BAYSWATER







## BOOK CLUB

Once a month, read a new book and gather together in an informal setting to yarn. Talk about your favourite chapters and characters over nibbles and a drink. This program will help you keep your reading schedule on track!

SUNDAYS  
MONTHLY  
3:30-6:30PM  
18-26 YRS  
LOCATION VARIES



## JAM TIME

The vibey once a month counterpart to Band Club. This is a less structured program where we bring our instruments and jam together. Whether its improvisation or picking a song and playing it. Jam Time is for everyone!

SATURDAYS  
MONTHLY  
1-4PM  
16-26 YRS  
WANDIN



## MISFITNESS

Come and get your sweat on! This is a great opportunity to get yourself moving and learn some techniques to strengthen your body. This ain't no picnic, you'll definitely want to keep your water bottle close by!

THURSDAYS  
4:30-6PM  
16-26 YRS  
BAYSWATER



## OSIAA

'Oh \$#!& I'm An Adult' is for those who have entered adulthood and need a little knowledge to make things easier. Taxes? Resumes? How do I change a tire? Insurance? Voting? Cooking? Come to OSIAA to learn about it all.

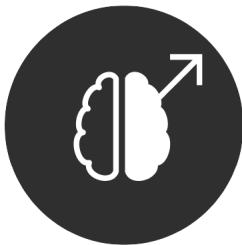
MONDAYS  
7-8:30PM  
SCHOOL LEAVERS  
TO 26 YRS  
MOOROOLBARK



## POP CULTURE CONVERSATION CLUB

Once a fortnight, meet up and chat about all things pop culture. Whether its games, tv shows, film, music, or books, this is a welcoming environment where you can share your thoughts and opinions and passions!

FRIDAYS  
MONTHLY  
5-7PM  
16-26 YRS  
RINGWOOD



## PROJECT MENTAL

A walk and talk style program dedicated to dealing, exploring, and learning about Men's mental health. This program raises awareness, supplies tools, and provides a safe place for male identifying beings to talk and explore.

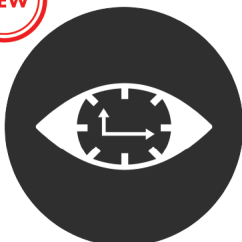
WEDNESDAYS  
4:30-6PM  
14-21 YRS  
WARBURTON



## PUZZLE CLUB

From sudokus to mazes to cryptic cross-words: stretch your mind in Puzzle Club. A relaxing environment to improve your critical thinking and experience many 'AHA!' moments. We'll do many classic puzzles as well as learning some new ones.

THURSDAYS  
5-6:30PM  
16-26 YRS  
RINGWOOD



## TIME IS TICKING

This program is all about social deduction games! Each week we'll play a different game from Werewolf to Blood on the Clocktower to Mafia. Race against the clock to figure out 'whodunnit!

TUESDAYS  
5-7PM  
14-21 YRS  
MOOROOLBARK



# YOUTH HANGOUT

Get together with friends, once a fortnight, to hang out, banter, and play games! A perfect opportunity to develop social skills and create lifelong connections in an environment that is both safe and fun. Also, food is provided, so that's pretty cool!

FRIDAYS  
FORTNIGHTLY  
5:30-8:30PM  
12-26 YRS  
WARBURTON



## DUNGEONS & DRAGONS

The ultimate roleplaying game, the epitome of theatre-of-the-mind! Be a hero! Be a bard, or a barbarian! The game is your oyster! This is a wonderful game to learn social skills, creativity, and teamwork. Make your way through the story in an environment fit for any class and race! We begin in a tavern...

We have six different D&D programs.



**MONDAYS**  
4:30-6:30PM  
10-16 YRS  
MOOROOLBARK

**TUESDAYS**  
4:30-6:30PM  
10-16 YRS  
MOOROOLBARK

**TUESDAYS**  
4:30-6:30PM  
10-16 YRS  
WARBURTON

**TUESDAYS**  
6:30-9PM  
18-26 YRS  
MOOROOLBARK

**WEDNESDAYS**  
6:30-9PM  
16-26 YRS  
BAYSWATER

**WEDNESDAYS**  
6-8:30PM  
14-26 YRS  
WARBURTON

## DM'S GAUNTLET



Are you interested in being a Dungeon Master, and running your own campaign? Well, this is the program for you! Learn how to be a Dungeon Master and weave a tale using the mechanics of D&D. This program will give you confidence, understanding of the process, and experience so you can run your own campaigns with your friends.

**THURSDAYS**  
5:30-7:30PM  
16-26 YRS  
RINGWOOD



## HOMESCHOOL SOCIAL GROUP

This program provides a wonderful opportunity for young people who attend homeschool to meet other young homeschoolers. We chat, play theatre games, write, draw, laugh, and hang out!

WEDNESDAYS  
11-1PM  
13-18 YRS  
BELGRAVE



## HOMESCHOOL THEATRE

Come together with other homeschoolers to play theatre games, rehearse a script, and put on a show! This is an awesome opportunity to learn new skills, meet new people, and have a good time being dramatic.

FRIDAYS  
10:30-12PM  
10-16 YRS  
BAYSWATER



## HOMESCHOOL ART

Homeschool Art is all about expression through drawing. Come together in a safe environment to play drawing games, learn new skills, and share art together. Draw to your heart's content with new friends!

FRIDAYS  
12:30-1:30PM  
12-18 YRS  
BAYSWATER



## SHIPWRECK COAST EXPLORE DAY

Explore the caves, check out rockpools, paddle in the surf, explore the cliffs. This section of coast has so much to offer.

15TH FEBRUARY • 12-18 YRS • \$40\*



## SAILING

Join us as we learn to sail and head out on the water as we navigate the wind and the waves.

15TH MARCH • 12-18 YRS • \$50\*



## ARCHERY & LA LA FALLS HIKE

Spend the morning aiming to shoot bullseye, then have some lunch and head up to check out Warburtons La La Falls.

17TH MAY • 12-18 YRS • \$45\*



## LAKE MOUNTAIN SKIING

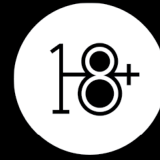
Head up to the snow and have some fun tobogganing before heading out on a cross country skiing adventure.

21 ST JUNE • 12-18 YRS • \$80\*

**\* NDIS SUPPORT COSTS ARE ADDITIONAL TO ACTIVITY COST  
FOR MORE INFORMATION ABOUT NDIS RATES PLEASE VISIT NDIS RATES  
PAGE OR CONTACT THE MISFIT PROJECT.**



# 18+ SOCIALS



For all of you who have reached adulthood to come and gather and connect! We go to bars, restaurants, theatre shows, and more! Each session is something new and exciting! This is a perfect opportunity to get out and about, make new friends, and try new things!

## FEBRUARY

### MIDSUMMA PRIDE MARCH

Join the march and celebrate all things LGBTQIA+. The Midsummer Pride March is an annual event that begun in 1996 and continues loud and proud today. Passionately walk the streets of St Kilda and show your support!

2ND FEBRUARY

\$30\*

### YARRA VALLEY MYSTERY PICNIC

Travel the yarra valley, from wineries, to apple orchids, to cheese factories as we gather all the things we need before we settle on our final destination and enjoy all our delicious items we have gathered.

15TH FEBRUARY

\$60\*

### ABLE SHOW

Come and watch an autobiographical solo performance about living in a society that is not made for you because you are different. A short statured, 1.28, human with a lot to say! Written and performed by Roos Rijnbeek.

22ND FEBRUARY

\$40\*

## MARCH

### EVIL DEAD THE MUSICAL

Sing along as college friends accidentally unleash an evil force that turns them into demons on one wild weekend at an abandoned cabin in the woods. We will grab lunch before heading to the venue for a bloody good time!

23RD MARCH

\$60\*

### SUPANOVA

Supanova is a comic and gaming convention ripe with your favourite shows, games, and characters! Feel free to cosplay or simply come along! We will be staying close by the venue and will be celebrating all things nerdy! Let the good times roll!

30TH MARCH

\$60\*

## APRIL

### TATTOO EXPO

We will be visiting a tattoo expo where there will be live tattooing, contests, performances, and opportunities to learn about the craft and current trends. If you've ever thought about getting a tattoo this may be a wonderful chance to do just that.

12TH APRIL

\$45\*

### GRAZELAND & PLANETARIUM

An evening of multicultural dining followed by an astronomical journey across the night time sky accompanied with an ethereal performance of Pink Floyd. This is a unique experience at the planetarium that you don't want to miss!

26TH APRIL

\$45\*



**MAY**

## **SMASH ROOM**

The ultimate cathartic experience: smashing plates, breaking furniture, and not getting told off for doing it! Choose your weapon of choice and go ham at the Smash Room.

17TH MAY

\$75\*

## **COMPUTER & BOARD GAMES PARTY**

For those who love online gaming and wish they could spend time with their friends IRL. This evening is a combination of computer games, board games and good fun with friends!

31ST MAY

\$80\*

**JUNE**

## **HOT SPRINGS**

You deserve a treat day, a time just for you, to relax, exfoliate, go on, you know you want it, it's all yours. The hot springs in the middle of winter? Can you think of anything better?

21ST JUNE

\$120\*

## **COCKTAIL MAKING CLASS**

For those who loved to make potions as a kid, now you get to make adult ones - that taste good. Join us as we learn how to make classic cocktails and then make sure they taste good afterwards.

28TH JUNE

\$60\*

\*NDIS Support costs, if/where required will be additional to the cost of the Activity.

# GETAWAYS

4TH-6TH APRIL

## DUNGEONS & DRAGONS INTENSIVE WEEKEND

(\$500\* 16-26 YEARS)

Spend a weekend immersing yourself playing dnd, as you spend the weekend playing your way through a campaign. This is the ultimate one shot experience spanning multiple days.

9TH-11TH MAY

## GHOST TOUR

(\$600\* 18-26 YEARS)

Experience the unexplained with a Paranormal tour at Beechworth Asylum. As well we will be immersing ourselves in the history of the area, and exploring all the other awesome things it has to offer. Billsons anyone?

6TH-9TH JUNE

## TASMANIA

(\$800\* 16-26 YEARS)

Spend the long weekend exploring Hobart and the surroundings, Check out the wondrous and bizzare things Mona has on display, Explore some beautiful spots in nature, Check out the famous salamanca markets and maybe discover some of Hobart's dark and haunted history.

\*NDIS Support costs, if/where required will be additional to the cost of the Activity.

2025

# PRICE GUIDE TERM ONE

Please note: Program fees can only be paid per term. Cost differences are calculated based on term length & public holidays.

PROGRAMS	PRICE
BACKSTAGE BANDITS	\$105 PER TERM *
BAND CLUB	\$120 PER TERM *
BOOK CLUB	\$20 PER SESSION *
CRAFT & CREATE	\$60 PER TERM *
D&D (MON)	\$140 PER TERM *
D&D (TUES, WED)	\$160 PER TERM *
DANCERS	\$120 PER TERM *
DM'S GAUNTLET	\$120 PER TERM *
GLEE CLUB	\$120 PER TERM *
HOMESCHOOL ART	\$120 PER TERM *
HOMESCHOOL SOCIALS	\$120 PER TERM *
HOMESCHOOL THEATRE	\$120 PER TERM *
IMPROV TROUPE	\$120 PER TERM *
INTERMEDIATE THEATRE	\$120 PER TERM *
JAM SESSION	\$20 PER SESSION *
JUNIORS THEATRE (MON)	\$105 PER TERM *
JUNIORS THEATRE (WED)	\$120 PER TERM *
LEGO CLUB	\$60 PER TERM *
MISFITNESS	\$120 PER TERM *
OSIAA	\$105 PER TERM *
POP CULTURE CONVERSATION CLUB	\$15 PER SESSION *
PROJECT MENTAL	\$120 PER TERM *
PUZZLE CLUB	\$120 PER TERM *
SKETCHERS	\$105 PER TERM *
SONG WRITERS	\$120 PER TERM *
STORYTELLERS	\$120 PER TERM *
TIME IS TICKING	\$120 PER TERM *
UP & COMERS THEATRE (MON)	\$105 PER TERM *
UP & COMERS THEATRE (WED)	\$120 PER TERM *
WRITERS	\$120 PER TERM *
YOUTH HANGOUT	\$15 PER SESSION *

\* All costs listed are out of pocket costs for the program. NDIS support costs are extra.  
PLEASE NOTE: These prices are only applicable to Term One.

2025

# PRICE GUIDE TERM TWO

Please note: Program fees can only be paid per term. Cost differences are calculated based on term length & public holidays.

PROGRAMS	PRICE
BACKSTAGE BANDITS	\$135 PER TERM *
BAND CLUB	\$150 PER TERM *
BOOK CLUB	\$20 PER SESSION *
CRAFT & CREATE	\$75 PER TERM *
D&D (MON)	\$180 PER TERM *
D&D (TUES, WED)	\$200 PER TERM *
DANCERS	\$150 PER TERM *
DM'S GAUNTLET	\$150 PER TERM *
GLEE CLUB	\$150 PER TERM *
HOMESCHOOL ART	\$150 PER TERM *
HOMESCHOOL SOCIALS	\$150 PER TERM *
HOMESCHOOL THEATRE	\$150 PER TERM *
IMPROV TROUPE	\$150 PER TERM *
INTERMEDIATE THEATRE	\$150 PER TERM *
JAM SESSION	\$20 PER SESSION *
JUNIORS THEATRE (MON)	\$135 PER TERM *
JUNIORS THEATRE (WED)	\$150 PER TERM *
LEGO CLUB	\$75 PER TERM *
MISFITNESS	\$150 PER TERM *
OSIAA	\$135 PER TERM *
POP CULTURE CONVERSATION CLUB	\$15 PER SESSION *
PUZZLE CLUB	\$150 PER TERM *
SKETCHERS	\$135 PER TERM *
SONG WRITERS	\$150 PER TERM *
STORYTELLERS	\$150 PER TERM *
TIME IS TICKING	\$150 PER TERM *
UP & COMERS THEATRE (MON)	\$135 PER TERM *
UP & COMERS THEATRE (WED)	\$150 PER TERM *
WRITERS	\$150 PER TERM *
YOUTH HANGOUT	\$15 PER SESSION *

\* All costs listed are out of pocket costs for the program. NDIS support costs are extra.  
PLEASE NOTE: These prices are only applicable to Term Two.

2024 - 2025

# NDIS COSTS & RATIOS

(hourly rates)

	1:1	1:2	1:3	1:4	1:5
WEEKDAYS	\$67.56	\$43.91	\$32.65	\$27.02	\$23.65
SATURDAYS	\$95.07	\$60.32	\$45.95	\$38.02	\$33.28
SUNDAYS	\$122.59	\$79.68	\$59.26	\$49.04	\$42.91
PUBLIC HOLIDAYS	\$145.44	\$89.60	\$66.13	\$54.39	\$47.35

Please contact [themisfitproject@outlook.com](mailto:themisfitproject@outlook.com) for an NDIS cost breakdown if you require one.

